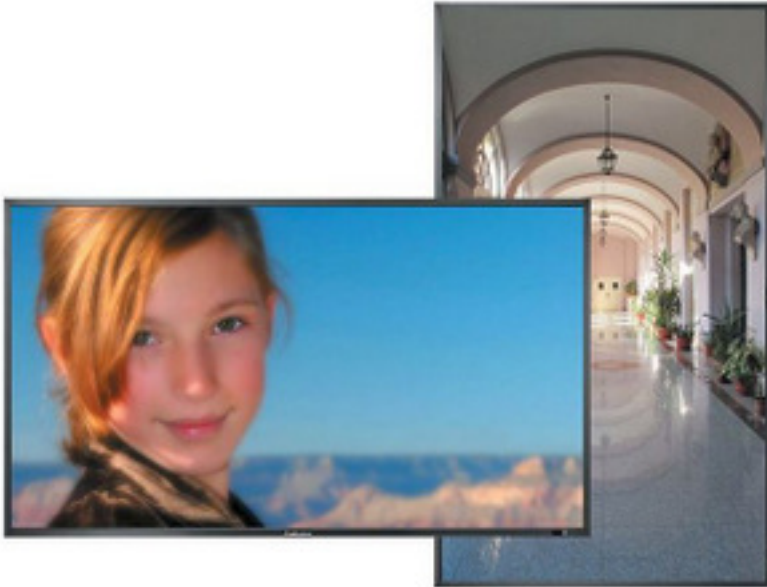


European Debut for Mitsubishi Electric's 70" LCD

Written by Bob Snyder
17. 12. 2012



Mitsubishi Electric's MDT701S will make its European debut at ISE 2013.

The flagship 70" edge-lit LED display is the largest professional LCD monitor ever offered by Mitsubishi, suited for public display or corporate settings.

Its LED illumination means reduced power consumption and slimmer profile, while delivering a 5000:1 contrast ratio and increased colour gamut. Lifespan is also increased and LEDs create less environmental impact at end of life.

Versatility is a key feature of the MDT701S: the maker cites "quick and easy deployment in any application." An Open Pluggable Standard (OPS) slot allows it to be used with a large number of vendor add-ins, such as single-board PC's, 3G and SDI cards (which make it well-suited to digital signage networks).

The MDT701S also features a built-in plug 'n' play USB hub that allows up to five USB hubs to be cascaded to a maximum of 16 USB inputs. MDT701S also supports LAN connections and is

European Debut for Mitsubishi Electric's 70" LCD

Written by Bob Snyder
17. 12. 2012

compatible with **AMX Device Discovery** and **Crestron Roomview** enabling it to be monitored, managed and controlled across the network or from web-enabled Apple iPhone, iPad or Android devices via **Crestron's Fusion RV** software.

The Full HD screen, narrow bezel MDT701S is equipped with dual light sensors, which allows a more accurate auto-brightness adjustment and optimised power consumption. Sophisticated power scheduling features also help to minimise energy usage, and the monitor can be safely operated in both landscape and portrait formats. The internal speakers throw downwards rather than to the rear, meaning less unwanted vibration. Mitsubishi's proprietary Super Resolution algorithm enhances detail in source material to maximize its Full HD resolution display.

The Mitsubishi Electric stand at ISE 2013 will feature its full range of LCD displays, plus its latest projection, rear projection, digital signage and control room solutions.

Go [Mitsubishi Electric Displays](#)